

Horse Creek

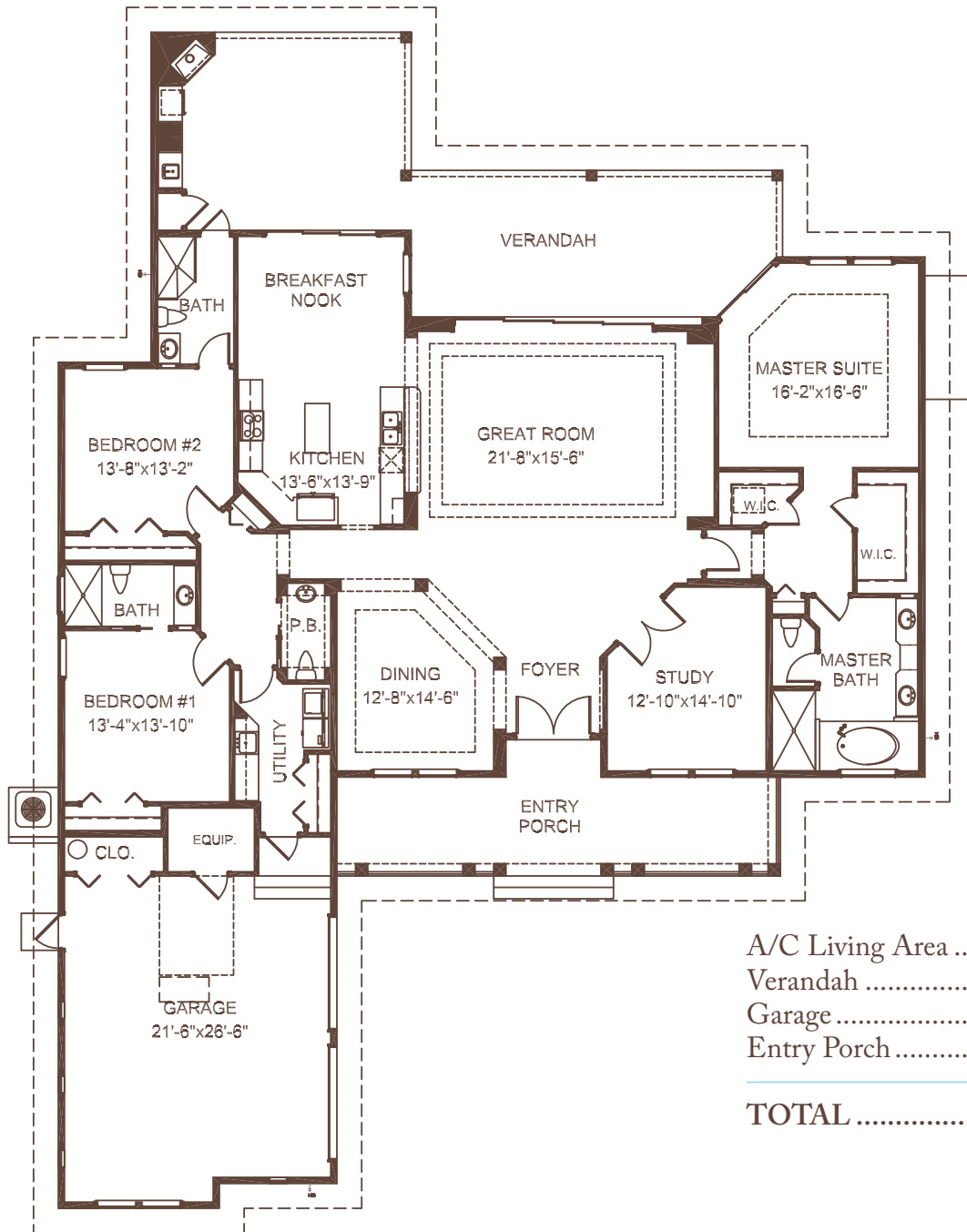
---

*Sabal II*



# Sabal II

3 Bedroom | 3.5 Bath | Study | Great Room | 2-Car Garage



A/C Living Area .....	2,888 Sq. Ft.
Verandah .....	677 Sq. Ft.
Garage .....	644 Sq. Ft.
Entry Porch .....	311 Sq. Ft.
<b>TOTAL .....</b>	<b>4,520 Sq. Ft.</b>

Offered exclusively by



HorseCreekCommunity.com | 239.332.7335 | Fort Myers, Florida 33905



Because of ongoing research to develop better building methods and materials, we reserve the right to change elevations, specifications, dimensions, design, materials and price without prior notice. CGC034850 ©2017 Daniel Wayne Homes, Inc.